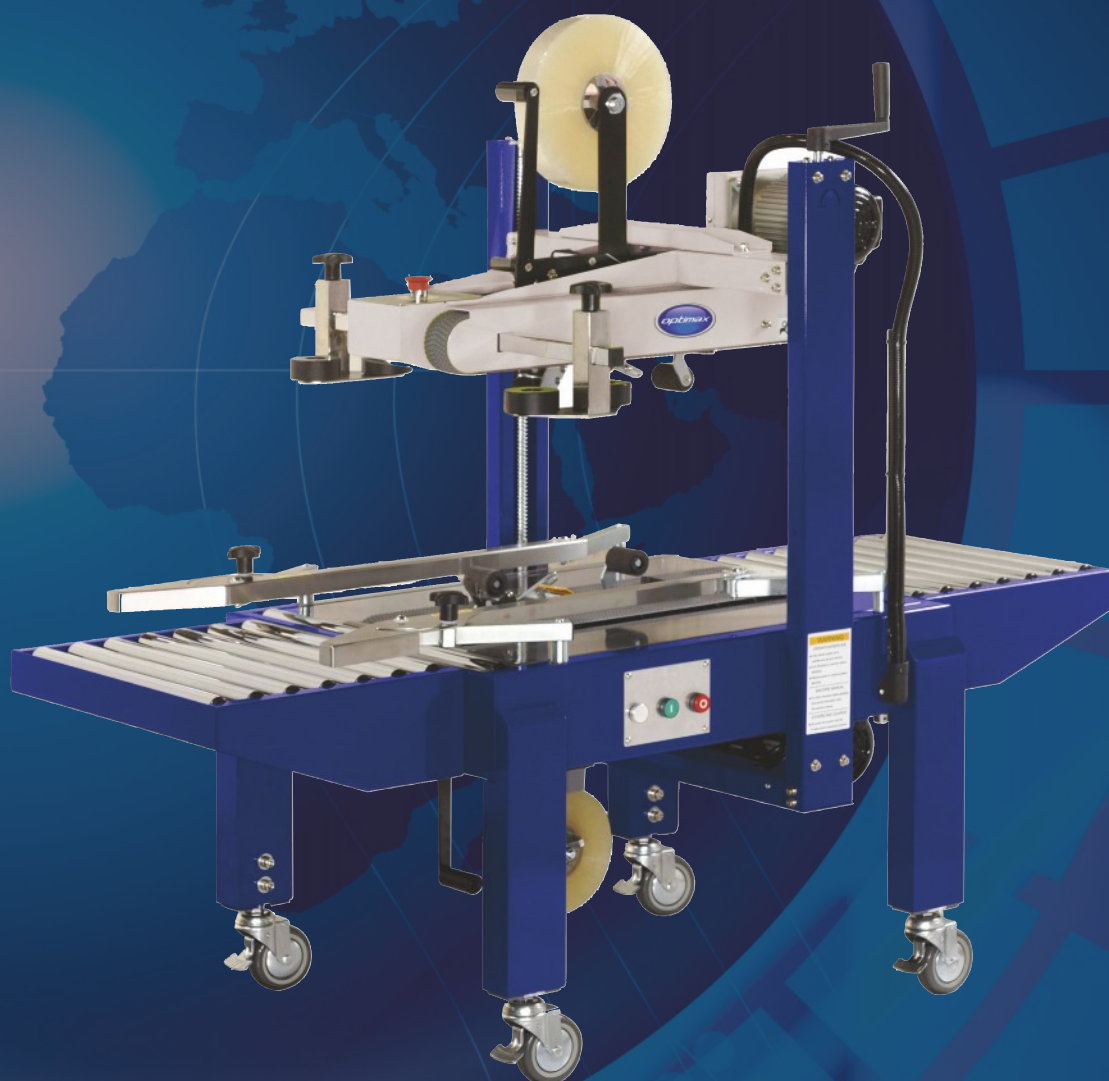


OPTIMUM QUALITY MAXIMUM RELIABILITY™



CT20U

Operating Instructions



CT20U Case Taper



Specification

Model:	CT20U
Tape width:	37.5mm (1.5") or 50mm (2")
Belt speed:	23mtr per minute
Carton capacity:	Length = 120mm - Width = 140 – 500mm Height = 120- 500mm
Power supply:	240V, 50Hz
Power consumption:	450W
Machine dimensions:	1637 x 754 x 1375mm (L x W x H)
Machine nett weight:	153kg

1. General information

1.1 Installation

To ensure safe and correct installation please check the following:

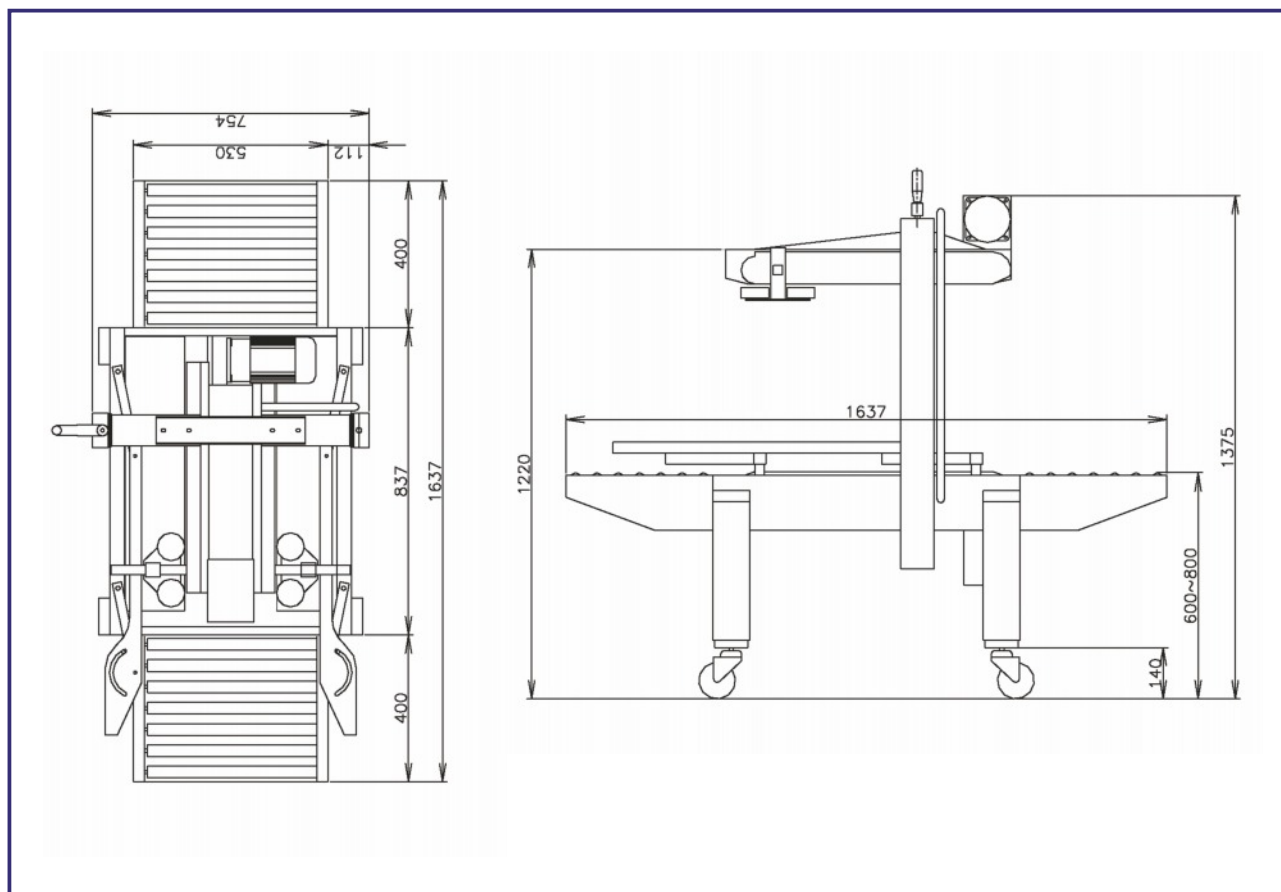
- a) Power supply is correct for the machine (240V, 50Hz)
- b) Power supply is fully earthed
- c) Ambient temperature for machine operating area is 0°C - 45°C
- d) The machine is sited away from any sources of vibration.

1.2 Operation

Check the following to ensure operator safety:

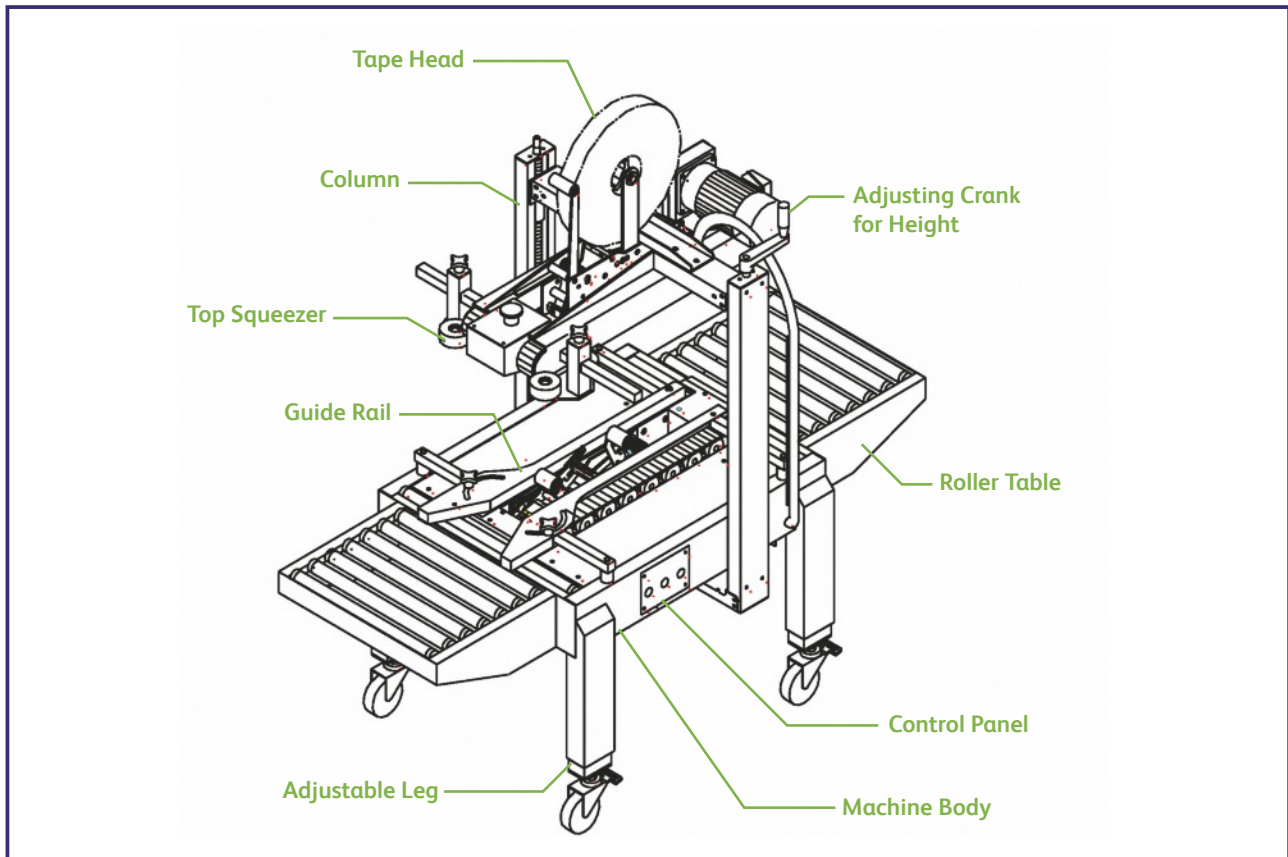
- a) Before operating the machine read this manual carefully and follow all instructions
- b) Avoid objects being placed on the power cable or upper tape head unit
- c) Avoid water contact with electrical parts.

2.1 Machine dimensions



CT20U Case Taper

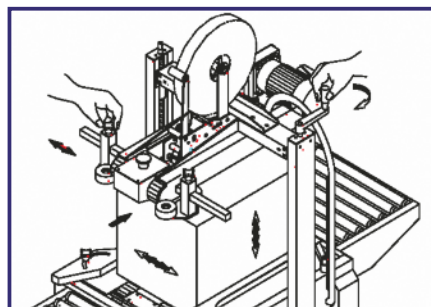
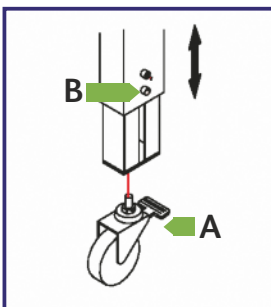
2.2 Machine diagram



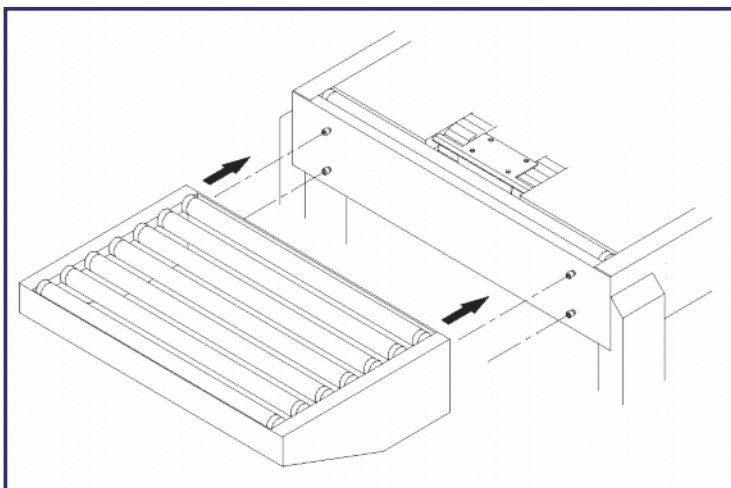
3. Operation

3.1 Installation

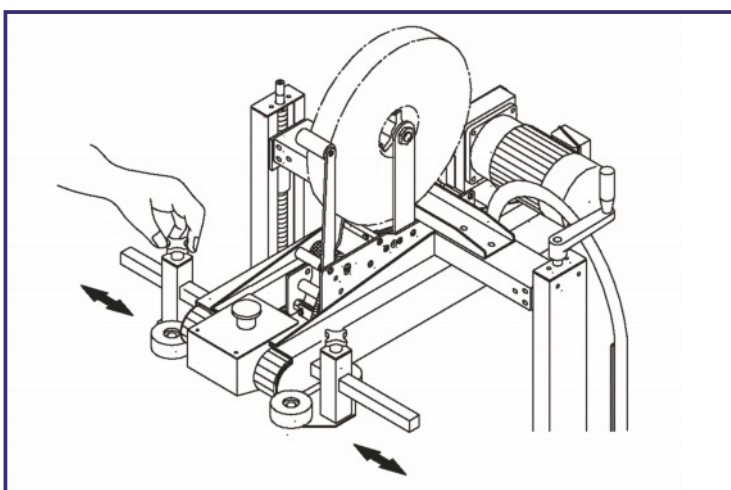
- Open the box and remove the machine carefully to avoid damage
- Use appropriate equipment to raise the machine to fit the castors to the bottom of the legs
- Screw the castors into the legs and tighten with the locking nuts (A)
- Set the machine to the desired height by extending the telescopic leg sections and secure with the locking screws (B)



- e) Move the machine into position, leaving sufficient room to attach the roller tables
- f) Attach the roller tables to the machine body as shown



- g) Load the tape head, referring to the separate tape head instruction manual
- h) Place an assembled carton on the infeed conveyor
- i) Adjust the side drive belts to precisely fit the carton width without jamming
- j) Use the two crank handles on top of the main pillars to lower the upper taping head assembly to the correct position – the taping head should rest on the top of the carton without exerting pressure on it.



- k) Connect the machine to the mains power and press the START button to begin.

CT20U Case Taper

3.2 Control Panel



a) Press to start motors and belts



b) Press to stop motors and belts

c) Power indicator light

OFF when machine is running

ON when machine idle but connected to power

4. Warnings

- 4.1 Modification, interference with or removal of safety measures fitted to this machine will endanger operators and may cause damage to the machine. The manufacturer will not be held responsible for damage, injury or death caused by any such alterations.
- 4.2 Do not position or operate the machine in areas where splashing of water or other liquids may occur.
- 4.3 Use only specified power cable
- 4.4 Do not allow the power cable to be subjected to any tension or pressure that may damage or break the cable.
- 4.5 Only use the machine as specified in this manual.
- 4.6 Do not exceed the maximum carton weights and dimensions specified in this manual.
- 4.7 Do not use this machine for unstable cartons that are at risk of falling.

5. Electrical

5.1 Power consumption

Belt motor: 0.18kVA

Machine: 0.4kVA

5.2 Power socket rating

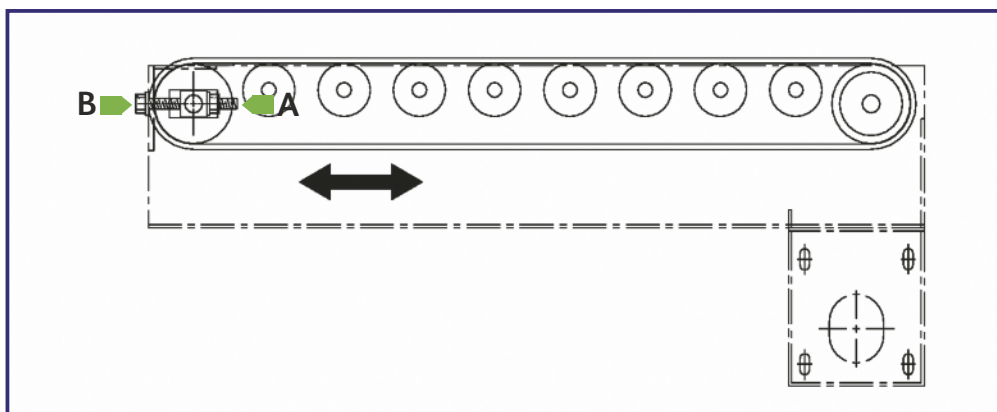
240V AC, 0.5kVA

6. Diagnostics

6.1 Feed belt adjustment

Excess belt tension may prevent free belt movement. Insufficient tension may cause lack of traction.

Loosen the belt nut (A) to a suitable tension (B)



6.2 Fuse replacement

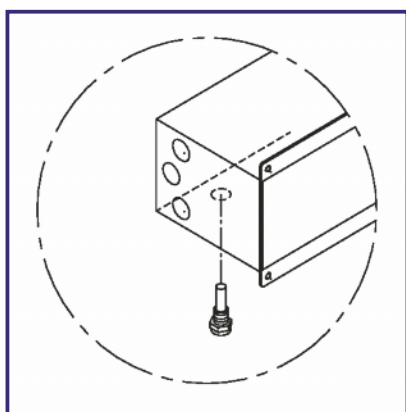
Check the power input

Release the emergency stop button

Press the start button to release the overload function

Check the condition of the fuse and replace if faulty

Re-start the machine





CT20U Operating Instructions 08.2015
Re-order code: LIT-MAN010

For more information on Optimax® Case Tapers and the
Optimax® Packaging Equipment range and to find your
preferred or appointed distributor please call
0800 018 93 93 or email admin@optimaxproducts.com